

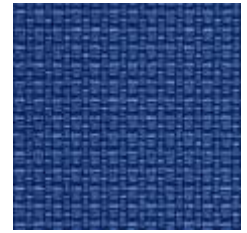
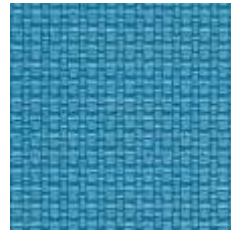
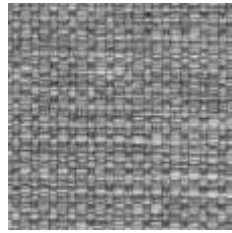
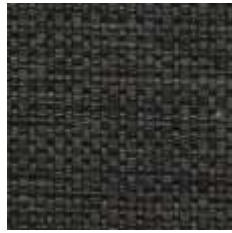


**.mdd**

---

FABRICS

# NEMO



# Group I

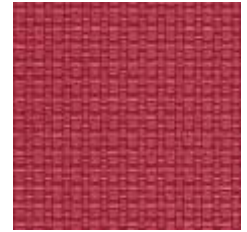
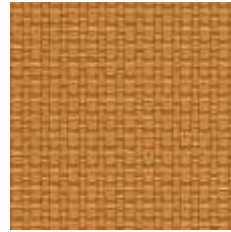
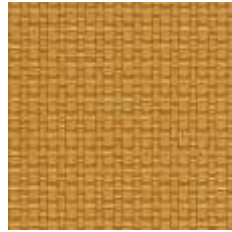
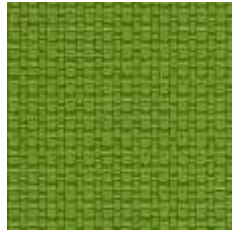
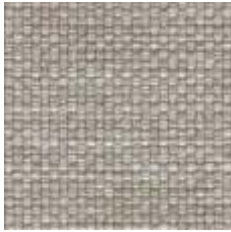
NE-16

NE-14

NE-10

NE-17

NE-15



NE-1

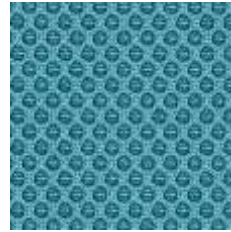
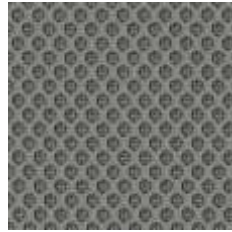
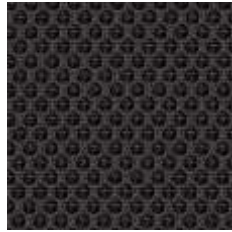
NE-9

NE-2

NE-3

NE-5

# RUNNER



# Group II

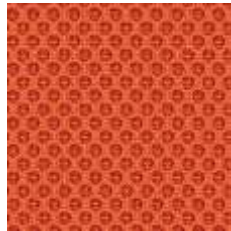
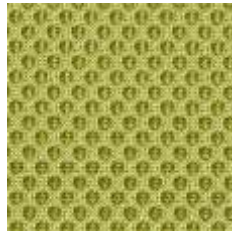
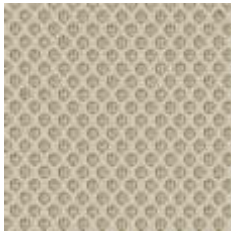
R-60999

R-60025

R-60011

R-66063

R-66064



R-61128

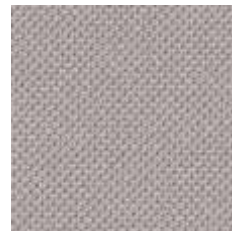
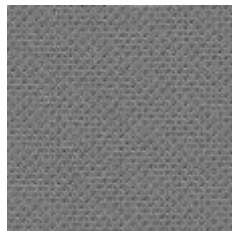
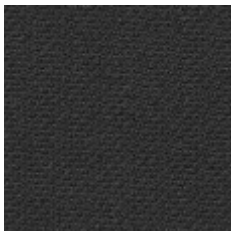
R-68056

R-68110

R-63034

R-64089

# ATLANTIC\*



# Group II

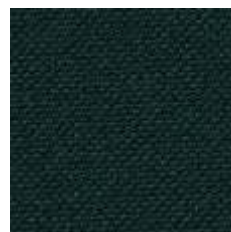
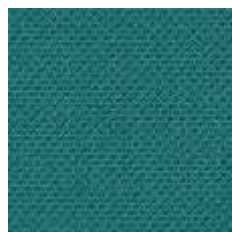
A-60025

A-60011

A-60141

A-65037

A-66064



A-61078

A-62048

A-67030

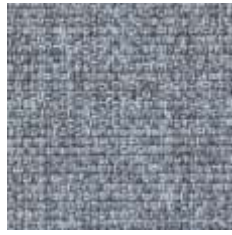
A-67043

A-64089

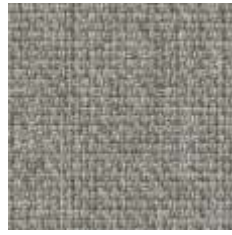
## MEDLEY



M-60999



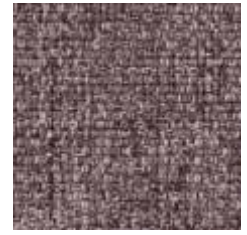
M-66008



M-60003



M-61189



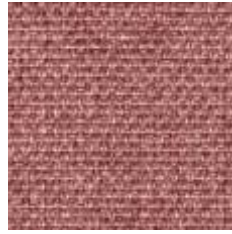
M-65011



M-66010



M-67006



M-63064



M-63017



M-64019



M-68005



M-62054



M-62002

## Group II

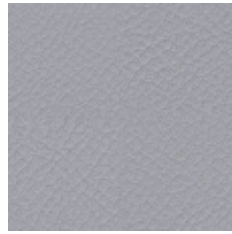
## VITA



V-07



V-04



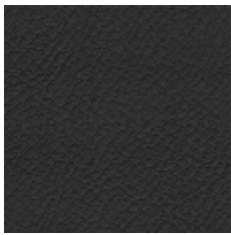
V-01



V-18



V-19



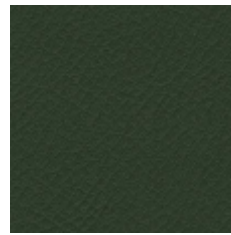
V-12



V-03



V-11



V-29



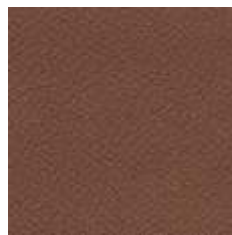
V-09



V-10



V-46



V-39



V-02



V-44

## Group II

CHARLES\*

Group II



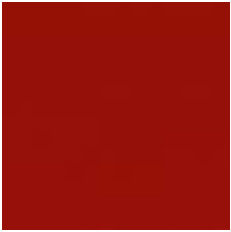
C-01

C-05

C-06

C-14

C-18



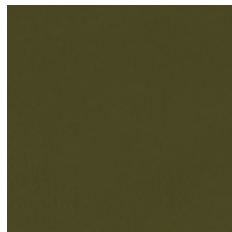
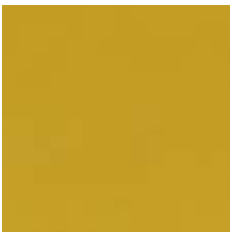
C-21

C-30

C-31

C-32

C-35



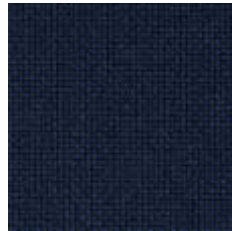
C-41

C-44

C-45

GO CHECK

Group II



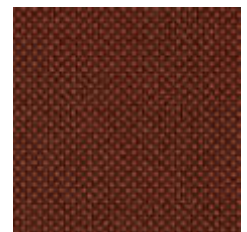
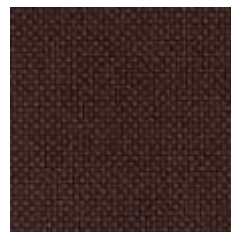
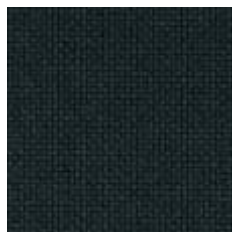
Go Uni-60999

G-60080

G-66138

G-66136

G-66135



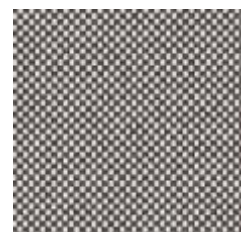
G-60084

G-68149

G-68152

G-61145

G-61144



G-64172

G-64171

G-63079

G-64183

G-60079

# MICA

# Group II



MC-2496-64183



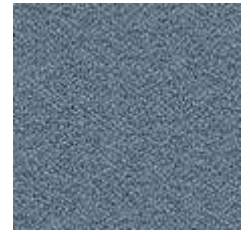
MC-2496-64146



MC-2497-64146



MC-2497-66006



MC-2496-66030



MC-2497-67042



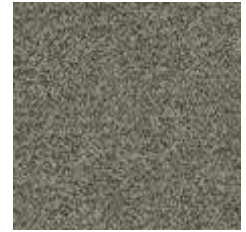
MC-2497-67017



MC-08 2497-68146



MC-2497-62048



MC-2496-62093



MC-2496-62095



MC-2496-62096



MC-2496-61008



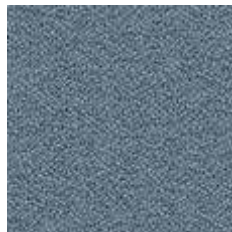
MC-2496-60000



MC-2497-60000



MC-2497-60021



MC-2496-66031



MC-2496-67015



MC-2497-64029

## SYNERGY



LDS-27



LDS-29



LDS-20



LDS-08



LDS-19



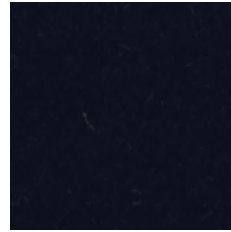
LDS-61



LDS-50



LDS-60



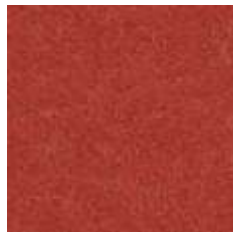
LDS-69



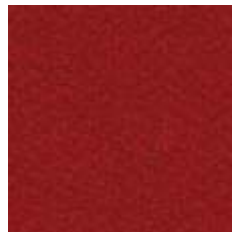
LDS-57



LDS-44



LDS-84



LDS-86



LDS-88

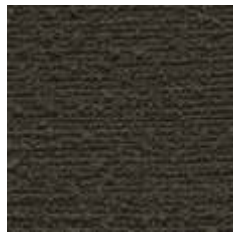


LDS-87

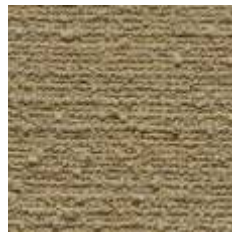
## TESSA



T-02



T-03



T-09

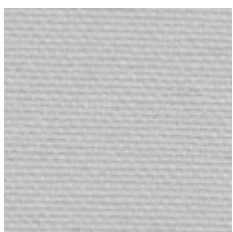


T-05



T-08

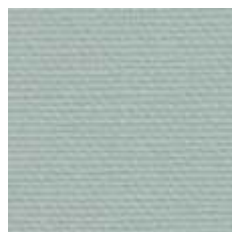
## SILVERTEX\*



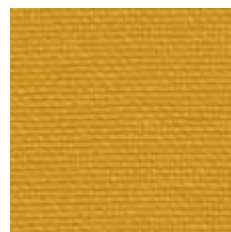
SX-122-2101



SX-122-0001



SX-122-2103



SX-122-2093



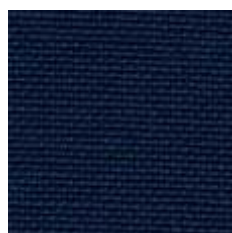
SX-122-2098



SX-122-4010



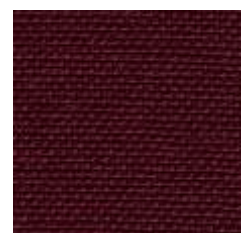
SX-122-5020



SX-122-6061



SX-122-6061



SX-122-6004

## Group III

## OCEANIC



O-16



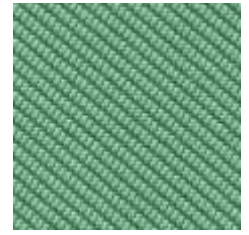
O-05



O-12



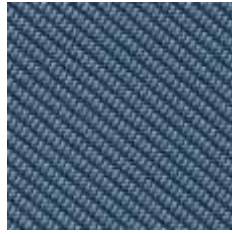
O-07



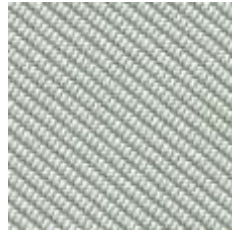
O-04



O-15



O-11



O-13



O-08



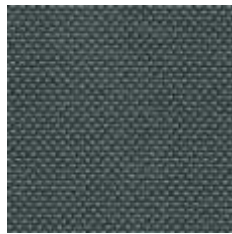
O-01

## Group III

## QUEST



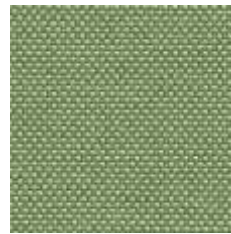
Q-08



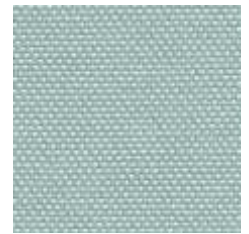
Q-04



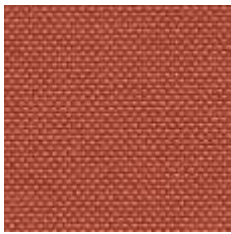
Q-18



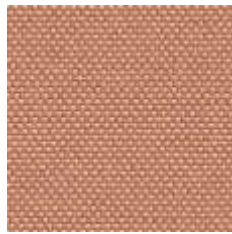
Q-13



Q-07



Q-24



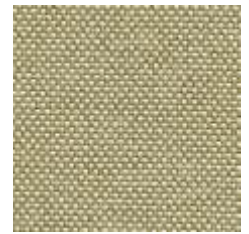
Q-26



Q-25



Q-21



Q-19

## Group III

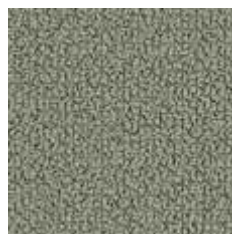
## GRAIN



GR-66232



GR-68243



GR-60301



GR-61252



GR-61250

## Group III



GR-66236



GR-63117



GR-62016



GR-62122



GR-64249

| Price group | Fabric    | Material  | Weight            | Abrasion resistance rubs   | Pilling resistance                           | Colour fastness to light                                   | Colour fastness to rubbing                               | Flammability   | More information   |
|-------------|-----------|---|-------------------|--|--|--|--|--|--|
| I           | NEMO      | Polyester 100%  | 366g/m2           | PN-EN ISO 12947 - 2:2 100,000  | Scale 1-8, max 8, PN-EN ISO 105 B02:2013 3-4 | Scale 1-5, max 5, PN-EN 1021 - 2:2007, PN-EN 1021 - 1:2007 | Scale 1-5, max 5, EN ISO 105x12, (wet/dry) 4-5           | Cigarette: PN-EN 1021-1:2014-12<br>Match flame: PN-EN 1021-2:2014-12   |  |
| II          | RUNNER    | 80% polyester / 20% post-consumer recycled polyeste   | 320g/m2, 510g/lm  | 70,000 Martindale, BS EN 14465, EN ISO 12947-2 , Double rubs wyzenbeek (ASTM D4157-07) (heavy duty upholstery) | Scale 1-5, max 5, EN ISO 12945-2 4-5         | Scale 1-8, max 8, EN ISO 105-B02 5-7                       | Scale 1-5, max 5, EN ISO 105x12, (wet/dry) 4-5           | BS EN 1021-2 Match, BS EN 1021-1 Cigarette, California Bulletin CAL 117-E-Class 1, CA TB 117-2013, Class Uno UNI 9175 Class 1  | Acoustic test sound absorption ISO 354   |
| II          | MEDLEY    | Polyester 100%  | 364g/m2, 510g/lm  | 75,000 Martindale  | Scale 1-5, max 5, EN ISO 12945-2 4           | Scale 1-8, max 8, EN ISO 105-B02 5-7                       | Scale 1-5, max 5, EN ISO 105x12, (wet/dry) 4-5/4-5       | BS EN 1021-2 Match, BS EN 1021-1 Cigarette, California Bulletin CAL 117-E-Class 1, CA TB 117-2013, Class Uno UNI 9175 Class 1  | Acoustic test sound absorption: ISO 354  |
| II          | ATLANTIC  | Polyester 100%  | 353g/m2, 530g/lm  | 110,000 Martindale, EN ISO 12947-2)  |  | Scale 1-8, max 8, EN ISO 105-B02 5-7                       | Scale 1-5, max 5, EN ISO 105x12, (wet/dry) 4-5/4-5       | BS EN 1021-2 Match, BS EN 1021-1 Cigarette, ASTM E 84, BS 476 Part 7, Class Uno UNI 9175 Class 1, NF P 92-503 M3P, CA TB 117-2013  |  |
| II          | VITA      | Surface: PVC, 98.5%, PU 1.5%<br>Substrate: Polyester 50%, 50% Cotton                          | 850g/m2, 1190g/lm | 100,000 Martindale, EN ISO 5470-2:2003,  |  | Scale 1-8, max 8, EN ISO 105-B02 5-7                       | Scale 1-5, max 5, EN ISO 105x12, (wet/dry) 4-5/4-5       | BS EN 1021-2 Match, BS EN 1021-1 Cigarette, BS 5852:2006 Section 4, Ignition Source 5, BS 7176:2017 Medium Hazard NF P 95 503 M2, FMVSS 302 (ISO 3795)   | Flexing cycles: BS EN ISO 7854:1997<br>Method B, 400,000, Anti-microbial/<br>Anti-fungal: AATCC 147:2011 |
| II          | CHARLES   | Polyester 100%  | 433g/m2           | 90,000 Martindale, EN ISO 12947-2  | Scale 1-5, max 5, EN ISO 12945-2 5           | EN ISO 105-B02 5   | Scale 1-5, max 5, EN ISO 105-X12, (wet/dry) 4-5          | EN1021-2   | Thread offset in the seam: EN ISO 13 936-2   |
| II          | GO CHECK  | Trevira cs 100%   | 310g/m2           | Go Check 80,000/ Go Uni 1 00,000 Martindale, EN ISO 12947-1,2 60,000 Double rubs                               | Scale 1-5, max 5, EN ISO 12945-2 5           | Scale 1-8, max 8, EN ISO 105-B02 5-8                       | Scale 1-5, max 5, EN ISO 105-X12:2001, (wet/dry) 4-5/4-5 | BS EN 1021-1&2 Cigarette and Match, BS 5852:2006 Crib 5, BS 7176:2017 Medium Hazard, NFP 92-503/504/505 M1, Class Uno UNI 9175 Class 1   |  |
| II          | MICA      | 97% post-consumer recycled polyester / 3% polyester   | 218g/m2           | 60,000 Martindale, EN ISO 12947-2 100,000 Double rubs wyzenbeek (ASTM D4157-07)                                | Scale 1-5, max 5, EN ISO 12945-2 4-5         | Scale 1-8, max 8, EN ISO 105-B02 5-8                       | Scale 1-5, max 5, EN ISO 105-X12:2001, (wet/dry) 4-5/4-5 | BS EN 1021-1 Cigarette, BS EN 1021-2 Match, CA TB 117-2013, ASTM E 84 Class 1, BS 476 Part 7 Class 1   | Acoustic test air flow resistanc EN 29053 & ISO 9053-1 (airflow resistance)                              |
| III         | SYNERGY   | Virgin Wool 95%, Polyamide 5%   | 400g/m2 560g/lm   | 100,000 Martindale   |  | ISO 105 B02: 5   | Scale 1-5, max 5, EN ISO 105-X12:2001, (wet/dry) 4/4     | BS EN 1021-1&2 Cigarette and Match, BS 7176 Low Hazard. UNI 9175 Classe 1 IM, B 3825 & A 3800-1  |  |
| III         | TESSA     | Poliester 95%, Akryl 5%   | 500g/m2           | >75,000 Martindale ISO 12 497-2  | Scale 1-5, max 5, EN ISO 12945-2 4-5         | ISO 105 B02: 4   | Scale 1-5, max 5, EN ISO 105-X12:2001, (wet/dry) 4-5/4-5 |  | Thread offset in the seam: EN ISO 13 936-2   |
| III         | SILVERTEX | Vinyl / Urethane Topcoat  | 685g/m2           | >300,000 Martindale (EN ISO 12947-2)   |  | UV Resistance: ISO 105 B04 ≥4/5                            |  | BS EN 1021-1&2 Cigarette and Match, EN 71-2:2006+A1:2007, NF P..JMO FTP 2010 Code MSC.307 (88) Part 8 3.1 & 3.2, NI 9175 (1987) / UNI 9175/FA1 (1994) Classe 1.IM, 92-503/M2, UNE 23.727-90 1R/M.2, DIN 4102 B2, B 3825 & A 3800-1 |  |
| III         | OCEANIC   | 100% post-consumer recycled polyester including 50% Seaqual Yarn                              | 497g/m2           | ≥100,000 Martindale  |  | 5 (ISO 105 - B02), OOC16: 4/5 (ISO 105 - B02)              | Scale 1-5, max 5, EN ISO 105-X12:2001, (wet/dry) 4-5/4-5 | BS EN 1021-1&2 Cigarette and Match, BS 7176 Low Hazard. BS 5852 Ignition Source 5 with EnviroFlam5, BS 7176 Medium Hazard with EnviroFlam5   |  |
| III         | QUEST     | 100% post-consumer recycled polyester including 75% Seaqual Yarn                              | 330g/m2           | ≥100,000 Martindale  |  | 4-6 (ISO 105 - B02)  | Scale 1-5, max 5, EN ISO 105-X12:2001, (wet/dry) 4/4     | BS EN 1021-1&2 Cigarette and Match, BS 7176 Low Hazard. BS 5852 Ignition Source 5 with EnviroFlam5, BS 7176 Medium Hazard with EnviroFlam5, B 3825 & A 3800-1  |  |
| III         | GRAIN     | 2287: 92% post-consumer recycled polyester / 8% polyester<br>2288: 80% post-consumer recycled | 439g/m2           | 100,000 Martindale (EN ISO 12947-2), double rubs wyzenbeek (ASTM D4157-07) (heavy duty upholstery) 100,000     | Scale 1-5, max 5, EN ISO 12945-2 5           | scale 1-8, max. 8 5-7 (ISO 105 - B02)                      | Scale 1-5, max 5, EN ISO 105-X12:2001, (wet/dry) 4-5/4-5 | BS EN 1021-1&2 Cigarette and Match, CA TB 117-2013   |  |

\* Fabric available in the full colour range from the manufacturer's offer.

Attention

Colours and decors structure of shown material may differently from the reality.